

SPICE-Equivalent circuit model library

Table 1. Equivalent circuit data

Part Number	L (μH)	F _{res} (MHz)	C1 (pF)	R1 (Ω)	R2 Nominal DCR of winding (Ω)
HCM1104-R20-R	0.2	131.6	7.32	1625.03	0.00063
HCM1104-R36-R	0.36	89.3	8.83	1913.50	0.00104
HCM1104-R45-R	0.45	77.0	9.48	2035.96	0.00107
HCM1104-R56-R	0.56	66.7	10.17	2163.57	0.00156
HCM1104-R90-R	0.9	48.8	11.84	2468.62	0.00217
HCM1104-1R0-R	1	45.5	12.25	2542.00	0.003
HCM1104-1R5-R	1.5	34.8	13.94	2845.31	0.0038
HCM1104-2R2-R	2.2	27.0	15.76	3164.97	0.006
HCM1104-3R3-R	3.3	20.7	17.94	3542.60	0.0108
HCM1104-4R7-R	4.7	16.4	20.09	3908.58	0.017
HCM1104-100-R	10	9.9	25.59	4821.43	0.027
HCM1104-220-R	22	5.9	32.93	6003.01	0.06

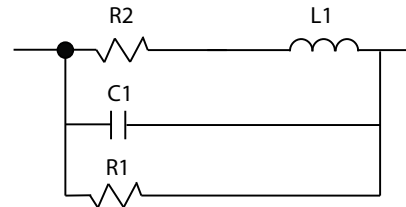


Figure 1. Equivalent circuit

Disclaimer

The data provided is for reference and is intended for evaluation purposes only. Users should verify all intended results in the end application.

Eaton
Electronics Division
 1000 Eaton Boulevard
 Cleveland, OH 44122
 United States
www.eaton.com/electronics

© 2018 Eaton
 All Rights Reserved
 Printed in USA
 Publication No. HCM1104 Spice
 April 2018