

Global Change Notification (GCN)

Product Family M-SD/Micro SD push push 10657769

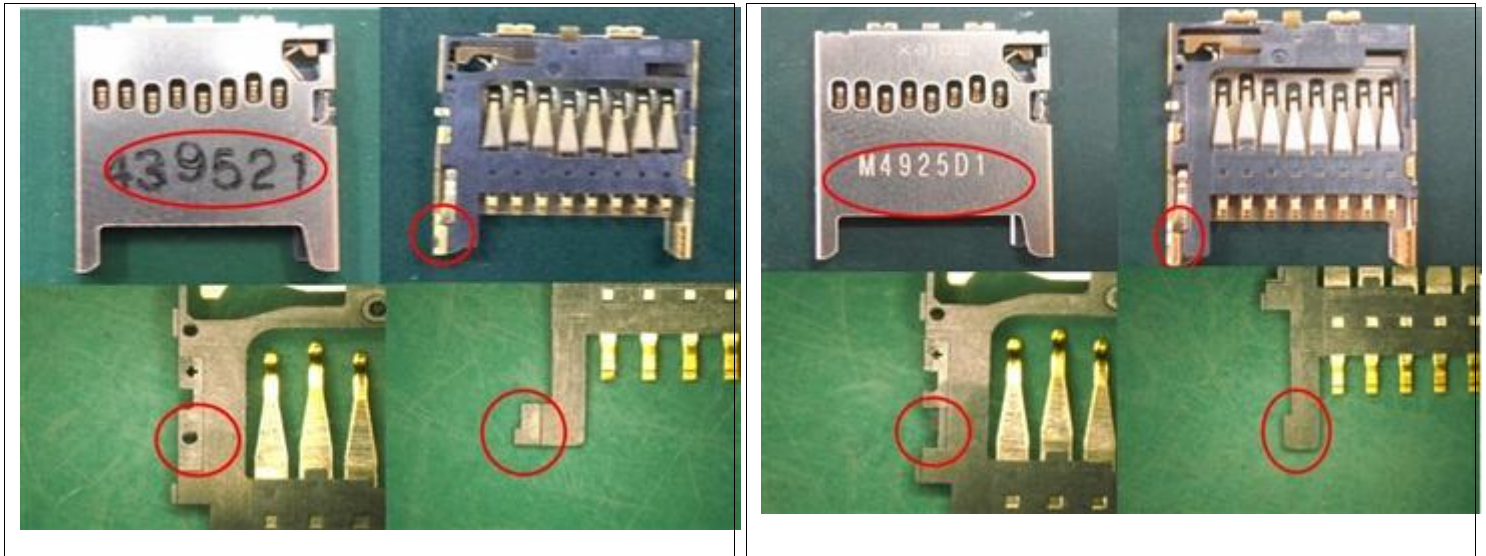
GCN Number

Series 504077 October 15, 2014

Date Issued

Reason For Change Manufacturing Process Change

Change Description This is to inform you about new use of semi-automatic Assembly machine for 504077-1891(M-SD/Micro SD push push), which is currently produced by manual toolings in Molex Dalian plant. There will be modification in part of overmold products and marking will be printed with use of laser. But there will be no influence on card insertion performance. The products manufactured by a semi-auto machine are marked with red dot mark on the right upper position of a reel label and a carton label. First Article Inspection has been implemented to avoid quality issues. The mass production start date is 8th October, 2014.



Part Numbers Affected Please refer to CustomerPartList.csv attached to e-mail message.

Reason For Short Notice Exception Special Request

Assessment Of Change (How Product Will Be Qualified & Validated) First Article Inspection was completed.

Internal Molex Qualification Date (Planned Date Information Available) October 07, 2014

Sample Availability Date (Changed Part) October 08, 2014

Date of Implementation October 08, 2014

Method of Identifying Change Red dot mark on a reel label and a carton label, Lot Number

Recommended Replacement Parts Not Applicable

Last Time Buy Date for Obsolete Parts

Last Time Ship Date for Obsolete Parts

Contact	Name	E-mail	Phone Number
Sales Engineer	Please refer to e-mail message for your local sales engineer.		
Regional Coordinator (Japan and Korea)	Naomi Maruyama	Naomi.Maruyama@molex.co.jp	+81-46-265-2416
Regional Coordinator (Asia- excluding Japan and Korea)	Allen Yu	Allen.Yu@molex.com	+886-2-66251751
Regional Coordinator (Europe, Middle East, Africa)	QuiNann Lim	QuiNann.Lim@molex.com	+31-40-295-8472
Regional Coordinator (Americas)	Maria Sullivan	Maria.Sullivan@molex.com	1-727-322-4352

Molex, Inc.
 2222 Wellington Court
 Lisle, IL 60532
 TEL: 630-969-4747
www.molex.com