



TAI-SAW TECHNOLOGY CO., LTD.

No. 3, Industrial 2nd Rd., Ping-Chen Industrial District,
Taoyuan, 324, Taiwan, R.O.C.

TEL: 886-3-4690038 FAX: 886-3-4697532

E-mail: tstsales@mail.taisaw.com Web: www.taisaw.com

Approval Sheet For Product Specification

Issued Date: Jan, 24, 2003

Product Name: SAW Filter 2441.8 MHz SMD 3X3 mm

TST Parts No.:TA0223A

Customer Parts No.: _____

Company: _____
Division: _____
Approved by : _____
Date: _____

Checked by: _____ Bob Chau

Approval by: _____ Francis Chen

Date: _____ 1, 24, 2003



TAI-SAW TECHNOLOGY CO., LTD.

No. 3, Industrial 2nd Rd., Ping-Chen Industrial District,
Taoyuan, 324, Taiwan, R.O.C.

TEL: 886-3-4690038 FAX: 886-3-4697532

E-mail: tstsales@mail.taisaw.com Web: www.taisaw.com

SAW Filter 2441.8 MHz for Bluetooth

MODEL NO.: TA0223A

REV. NO.:1

A. MAXIMUM RATING:

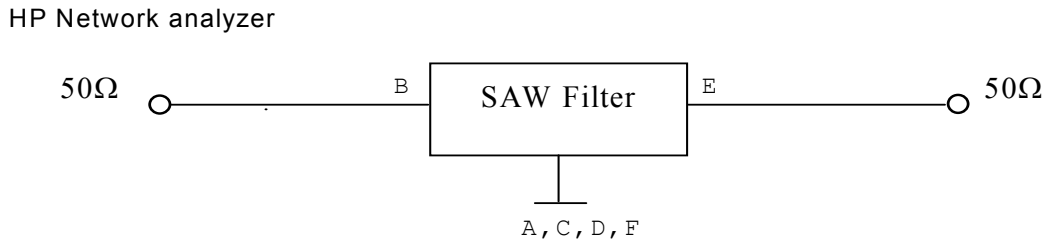
1. Input Power Level: 10 dB_m
2. DC voltage: 0 V
3. Operating Temperature: 0°C to +60°C
4. Storage Temperature: -40°C to +85°C

B. ELECTRICAL CHARACTERISTICS:

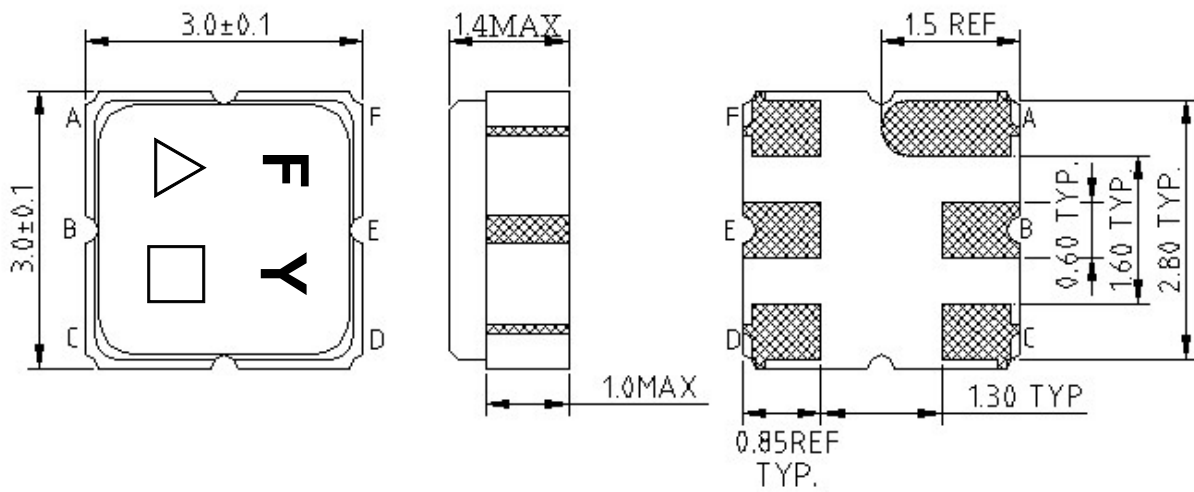
Item		Min.	Typ.	Max.
Center frequency	F_c (dB)	-	2441.8	-
Insertion loss (2400~2483.5 MHz)	IL (dB)	-	2.1	5.0
Amplitude ripple (2400~2483.5 MHz)	(dB)	-	0.9	3.0
Attenuation (Reference level from 0 dB)				
D.C. ~ 1700	MHz (dB)	20.0	29.0	-
1700 ~ 2200	MHz (dB)	25.0	30.0	-
2700 ~ 3100	MHz (dB)	30.0	40.0	-
3100 ~ 4000	MHz (dB)	20.0	29.0	-
4000 ~ 5000	MHz (dB)	10.0	20.0	-
VSWR (2400~2483.5 MHz)		-	1.7	2.6
Source impedance	Z _s (Ω)	-	50	-
Load impedance	Z _L (Ω)	-	50	-

Note1. The standard definitions is in JIS C 6703

C. MEASUREMENT CIRCUIT:



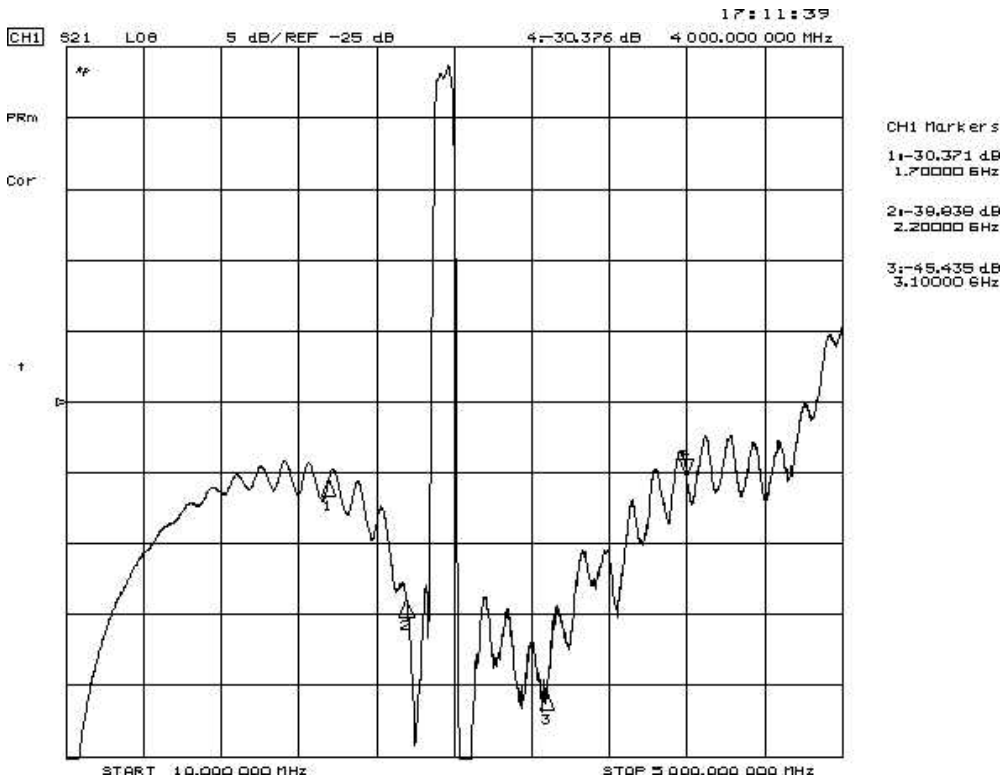
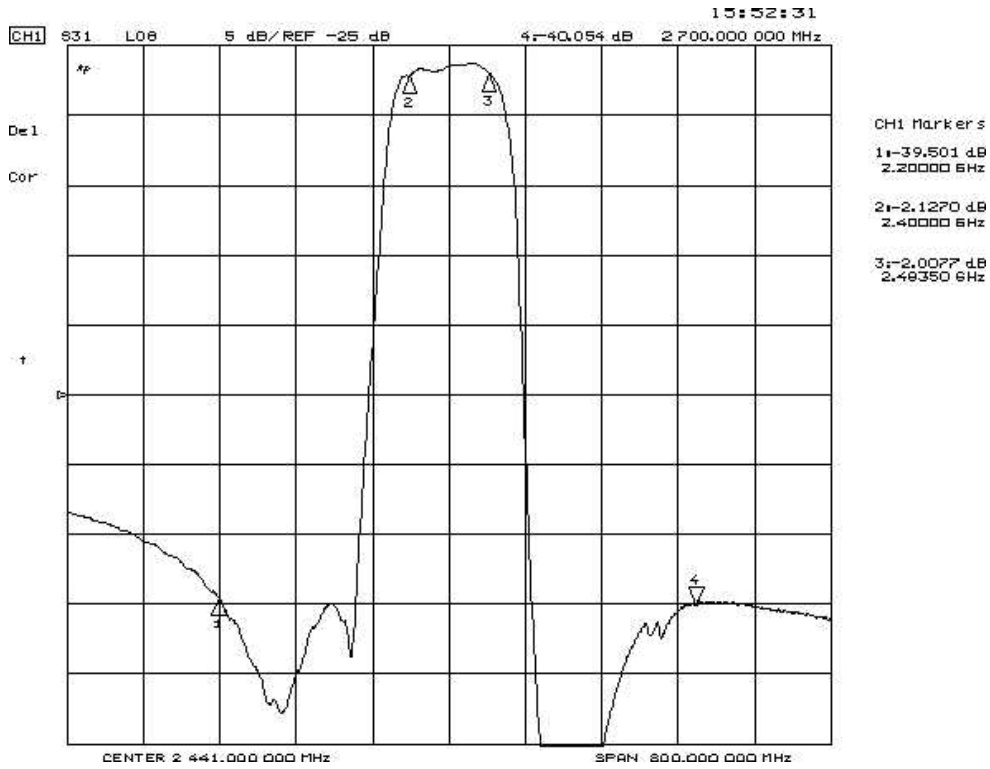
D. OUTLINE DRAWING:



B INPUT
 E OUTPUT
 A,C,D,F GROUND
 DIMENSION : mm

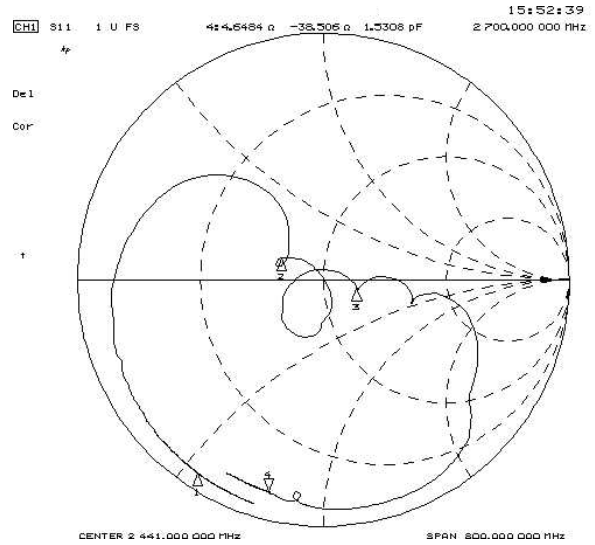
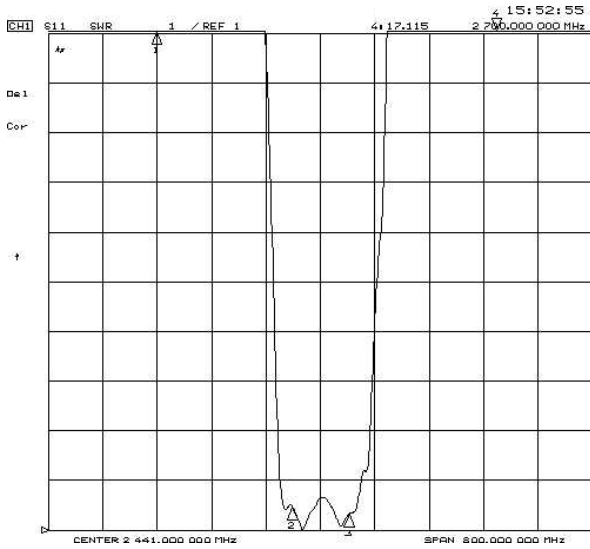
△ : Year Code
 □ : Date Code

E. Frequency Characteristics : Transfer function

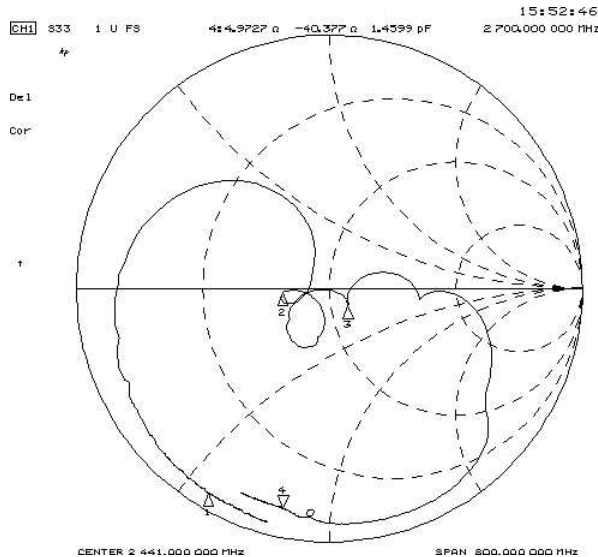
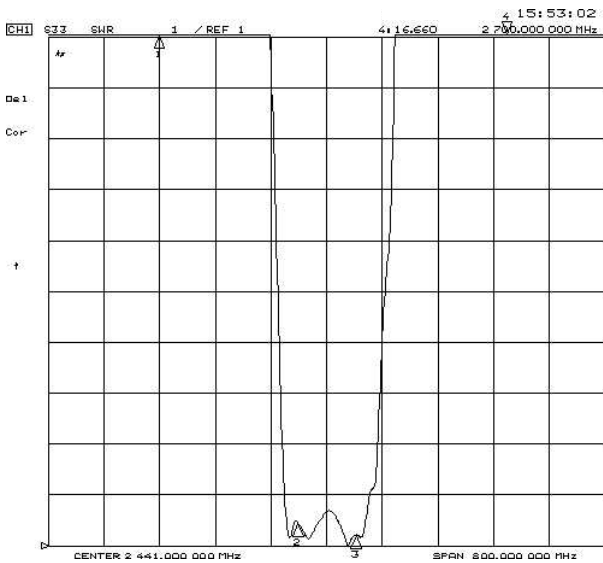


Reflections Functions :

S11 VSWR

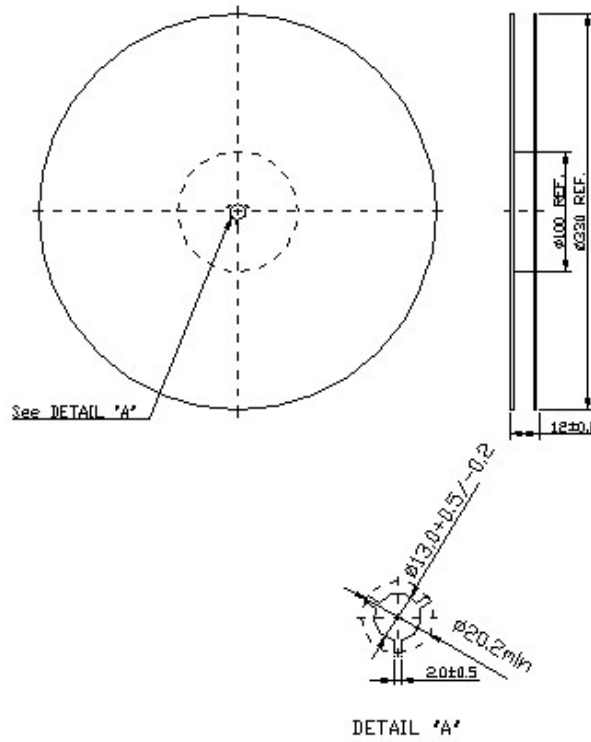


S22 VSWR



F. PACKING:

1. REEL DIMENSION



2. TAPE DIMENSION

